



PRINTCHEK

How it Works

A series of line scan cameras image the entire width of the FlexoFolderGluer or DieCutter to collect a full size image of every fed sheet. Sheet size, rotation and print quality are assessed on each sheet and compared to either a pdf golden standard or a learned golden standard.

- Prior to Die-Cutter
- Empty print section
- Dryer area
- Above or below sheet depending on machine-type



Features

PrintChek inspects the following:

Sheet Problems

- Blank measurement and skew
- Box damage including de-lam on surface being inspected

Print Problems

- Spots/hickeys
- Registration (color-to-color and color-to-cut)
- Stripes
- Scratches
- Missing print
- Smearing
- Double print/ghosting
- Drying
- Barcode health check
- Delta-e color measurement



Full Sheet Inspection

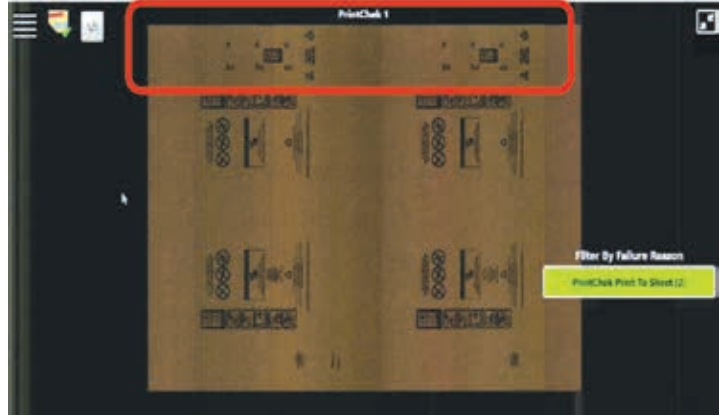


Familiar ClearVision User Interface

Defect



Standard



Details

In-field adjustable:

- Lighting intensity
- Lighting angle
- Camera alignment
- Resolution – 0.5mm [0.020"]
- Minimum defect size – 2mm [0.080"]
- Color delta e differences of >3

Working With PrintChek

- Familiar ClearVision interface
- Large full-sheet images
- Easy to enable and configure tolerances and tests
- Full local defect data collection
- Archival image management
- Easy arming

Components

- Line-scan cameras
- Lighting Modules
- Image processing computer
- Operator Interface
- Sheet guiding
- Air blow-off
- Lighting Power Supplies
- Cooling



For more information, visit valcomelton.com or contact your local Valco Melton representative.

World Headquarters: Cincinnati, OH, USA (Corporate Offices) • Tel: +1.513.874.6550 • info@valcomelton.com

Europe Headquarters: Orkoien, Spain • Tel: +34.948.321.580

Asia Headquarters: Xiamen, Fujian, China • Tel: +86.592.591.7854